

# 10 ways to maximize value in your SAP S/4HANA implementation for supply chain



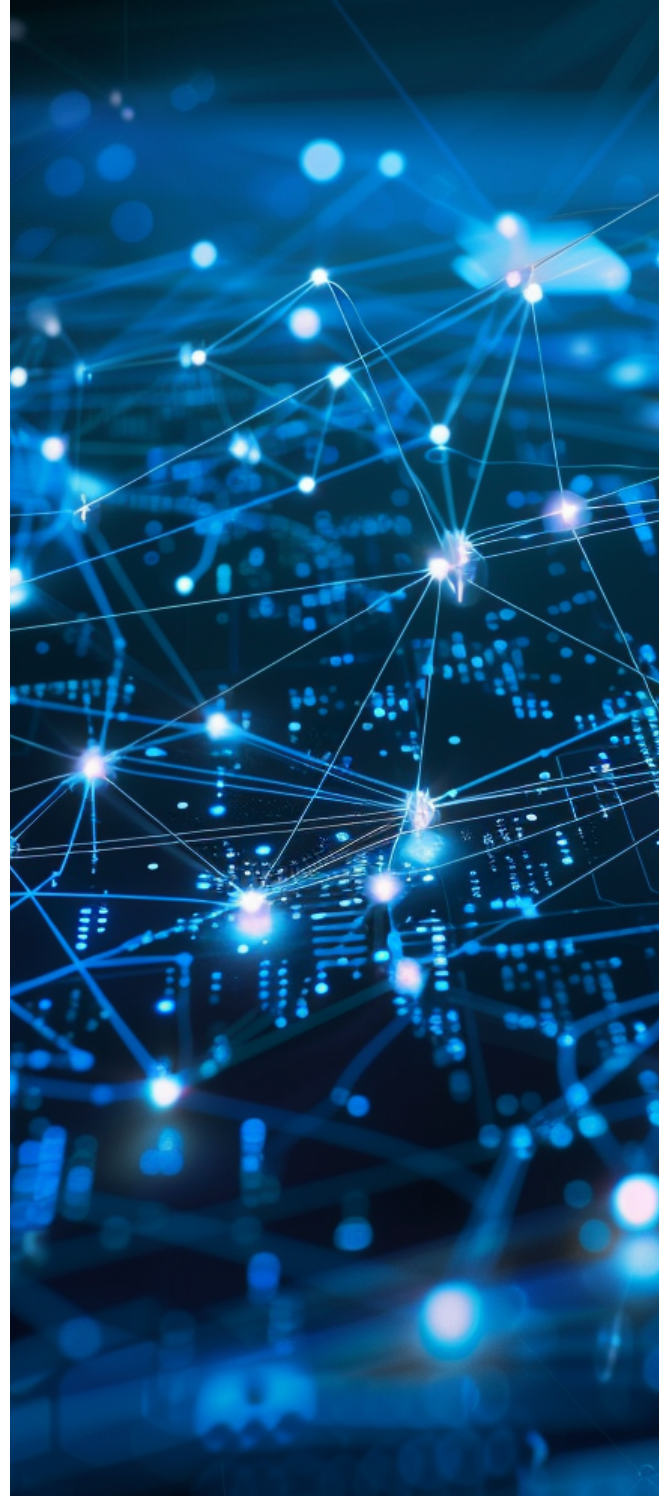
# 10 ways to maximize value in your SAP S/4HANA implementation

Forward-looking software to manage supply chain complexity

At 4flow, we frequently hear from organizations asking us to reevaluate their SAP S/4HANA implementation strategies. Their main concern is that the anticipated business value is at risk due to issues with their current approaches.

SAP S/4HANA has the power to unlock significant value for businesses, especially in supply chain management. However, reaching this potential requires an expert implementation.

In this guide, we will explore 10 key considerations and best practices for any SAP S/4HANA implementation for supply chain. Keep these in mind to ensure the maximum benefits for your business.





---

# 1 Define clear objectives and scope

**Identify your business goals:** Align the project with your overall business strategy, focusing on goals such as reducing costs, improving efficiency, enhancing customer service or enabling growth.

**Set measurable KPIs:** Establish key performance indicators (KPIs) to track progress and measure the impact of the implementation on supply chain operations. Consider involving a consulting firm when establishing these KPIs to benefit from broader industry perspective and implementation experience.

---

# 2 Engage stakeholders early

**Involve key stakeholders:** Engage executives, supply chain managers, your IT team and end users from the outset. Their buy-in and insights are crucial for a successful implementation.

**Develop a change management plan:** Prepare the organization for change with a well-defined strategy that includes communication plans, training programs and support systems to facilitate user adoption. Organizational change management is key, so don't skip it!

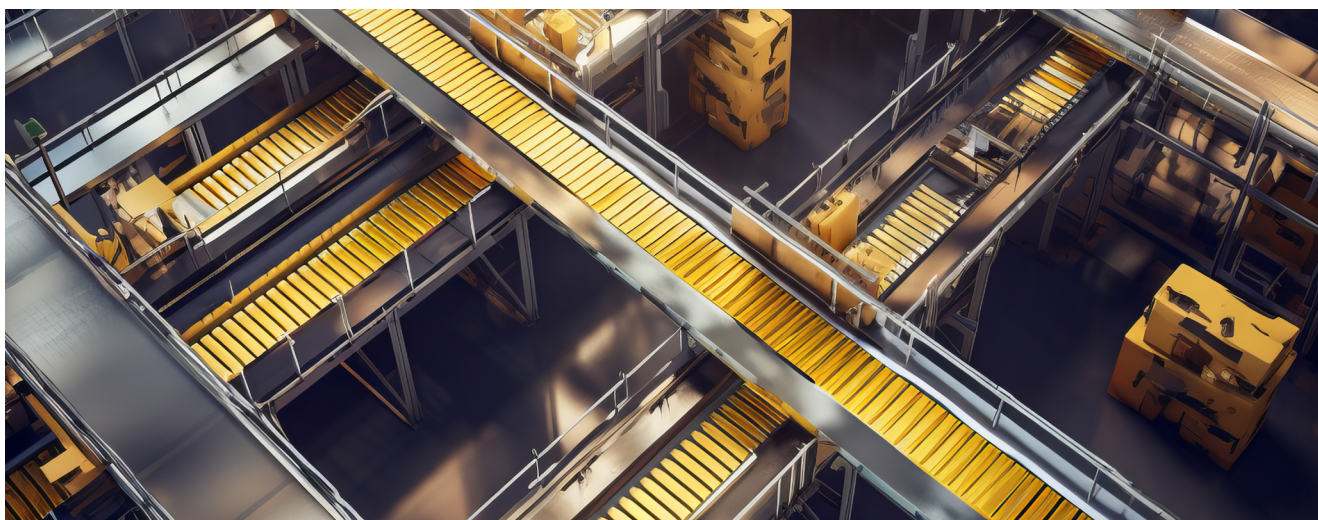
---

# 3 Conduct a thorough assessment

**Evaluate current processes:** Perform a detailed assessment of existing supply chain processes to identify pain points, inefficiencies and areas for improvement.

**Identify integration points:** Map out how SAP S/4HANA will integrate with current systems and other enterprise applications to ensure seamless data flow and process continuity.

---



---

## 4

### Leverage best practices and industry standards

**Adopt standard processes:** Utilize SAP's best practices and standard processes to minimize customization and leverage proven industry standards. The architecture doesn't necessarily need to be on public cloud, and you don't need to leverage SAP Business Technology Platform (BTP) for complex customizations.

**Benchmark against peers:** Compare your implementation plan and goals with industry benchmarks to ensure your project is on track to bring your organization a competitive advantage.

---



---

## 5

### Make data migration and quality part of your plan

**Assess data readiness:** Evaluate the quality, completeness and consistency of your existing data. Develop a data migration strategy that includes data cleansing, mapping, and validation.

**Implement data governance:** Establish data governance policies to maintain data integrity, security and compliance throughout the implementation process.

---

## 6

### Optimize your system configuration

**Customize wisely:** Tailor your SAP S/4HANA configuration to fit your specific business needs without over-customizing, which can complicate upgrades and maintenance. Adopting the clean core concept – that is, keeping the core system as close to standard as possible – can be a smart choice.

**Utilize advanced features:** Take advantage of SAP S/4HANA's advanced features such as machine learning, AI and real-time analytics to enhance decision-making and operational efficiency. SAP has a lot more features planned – take a look at the [SAP Road Map Explorer](#).

---



# 7

## Ensure scalability and flexibility

**Design for growth:** Build a scalable solution that can easily accommodate future growth, new business processes and additional functionalities without major overhauls.

**Choose the right deployment model:** Decide between on-premise, cloud or hybrid deployment based on your business requirements, budget and IT strategy.

# 8

## Focus on user training and support

**Develop comprehensive training programs:** Take advantage of role-based training to ensure users are proficient with your new system's features and functionalities.

**Establish ongoing support:** Set up a support framework that includes helpdesk services, user communities and continuous learning opportunities to assist users post-implementation.



---

# 9

## Monitor and optimize performance

**Implement performance monitoring tools:** Use SAP's monitoring tools and dashboards to track system performance, user adoption and process efficiency.

**Gather feedback and iterate:** Continuously collect feedback from users and stakeholders to identify areas for improvement and optimize processes and system configuration.

---



---

# 10

## Engage with experienced partners

**Choose the right implementation partner:** Select a consulting partner with proven experience in SAP S/4HANA implementations and a deep understanding of your industry. The right partner can save you time and effort.

**Leverage the SAP ecosystem:** Engage with SAP's partner network for additional expertise, resources and support to enhance your implementation success.

---



By carefully considering these factors, you can **maximize the value of your SAP S/4HANA implementation** and drive significant improvements in your supply chain operations.



SAP is a registered trademark and service mark of SAP SE and/or its affiliates.

Follow 4flow on LinkedIn 

**4FLOW**



Ready to transform your supply chain with SAP S/4HANA?

Contact us today for a free consultation and take the first step towards a smarter, more efficient supply chain.

[sap@4flow.com](mailto:sap@4flow.com)